

WHERE INSPIRATION FLOWS



ACCESSORIES **2019**

VADO

CONTACT US

SALES +44 (0)1934 745160

FAX +44 (0)1934 745161

EMAIL EXPORT@VADO.COM

WEB WWW.VADO.COM



CONTENTS

6 WHY VADO?



12 OMIKA



14 KOVERA



16 SPA



18 PHASE



20 PHOTON



22 INFINITY



24 LEVEL



26 SHAMA



28 LIFE



30 ELEMENTS



32 TOURNAMENT



34 BASKETS





EXPERIENCE OUR PRODUCTS IN FULL 3D.



STEP 1: DOWNLOAD

VIV is available to download for free on the App Store and Google Play Store and works with all iOS and Android devices.



STEP 2: SCAN

Using the **VIV** App, scan the tracker to generate life size **VADO** products in 3D.

STEP 3: EXPERIENCE

Prepare for an enriched digital experience as you bring your favourite **VADO** ranges to life.

THIS TRACKER IS THE START OF A WHOLE
NEW EXPERIENCE IN **VIRTUAL INSPIRATION**



YOU ARE IN SAFE HANDS.

WHY VADO?

We don't compromise on our design or manufacturing – superior quality taps, showers and accessories are our passion. From product design to our seven step hand polishing process, we manufacture our products to last, so whichever range you choose, outstanding quality comes as standard.

VADO products are expertly designed in Cheddar, England, the home of our brand for the last three decades.

We are experts in the brassware industry and take pride in our heritage and values. We ensure only the finest materials are crafted into products that not only look premium, they feel it too.



THE PERFECT CHOICE FOR YOUR HOME.

We understand there are a lot of choices to make when searching for your perfect kitchen or bathroom fittings, with an overwhelming amount of confusing information and advice available.

At **VADO** we don't think it needs to be that complicated. We think all you need to know is that when you choose a **VADO** product, you are getting the very best of British design and exceptional quality.

- 12 year guarantee
- Tested to industry leading standards
- Friendly and knowledgeable customer service team
- A product you will love using every day





○ Burj Khalifa, Dubai, UAE

DON'T JUST TAKE OUR WORD FOR IT.

VADO products are in some of the most prestigious hotel, commercial and residential developments across the world. This cityscape shows a small snapshot of a variety of prestigious projects we have been involved with.

The exceptional quality of our products, outstanding customer service and our agility to support large scale developments makes **VADO** a globally trusted brand.

JW Marriott Marquis, Dubai, UAE ○

○ Central Market, Abu Dhabi, UAE

Serena Hotel, Kampala, Uganda ○

○ The Shard, London, UK

○ The Spire, London, UK

○ Peckforton Castle, Cheshire, UK

Harbourside Apartments, Glasgow, UK

○ Four Seasons Hotel, Hong Kong

○ Telford Homes, London, UK

- Deansgate Square, Manchester
- Marine Wharf, London
- One Angel Square, Manchester
- Hilton Park Lane, London
- Marriott Royal Hotel, Bristol
- Montevetro Building, Dublin

- El Pasha Hotel, Ibiza
- Al Manshar Rotana Hotel, Kuwait
- Ocean 2 Hotel, Barbados
- Sheraton Hotel, Warsaw
- Marriott Hotel, Baku
- Angaga Island Resort, Maldives
- Chedi Hotel, Oman
- Intercontinental Resort, Mauritius
- Eastern & Oriental Hotel, Malaysia

To see the full list please visit
vado.com/projects

MAKING YOUR DREAM BATHROOM A REALITY.

STEP 1

Choose from one of our many bathroom brassware collections. We have a wide variety of styles to suit individual tastes.

STEP 2

Find your local stockist. If you don't already know who your local stockist is, visit vado.com/stockists to find your local verified **VADO** independent retailer.

STEP 3

Visit your verified **VADO** independent retailer to discuss all of your bathroom design and installation requirements with a fully trained bathroom adviser.

STEP 4

Reinvigorate yourself and your senses in your beautiful new bathing space.



VERIFIED VADO INDEPENDENT RETAILERS.

ACCESS
STOCKISTS
WITH **VADO**

We carefully select and train all of our **VADO** independent retailers to ensure you have the best experience when selecting your perfect bathroom.

Our stockists will not only help you to select the right **VADO** taps and showering products to deliver you a great experience day in day out, they will also guide you in choosing the best coordinating sanitaryware and tiling options to create your dream bathroom.

BRASSWARE IS OUR SPECIALITY

At **VADO** we believe in channelling all of our expertise and engineering know-how to focus just on brassware technology to deliver outstanding products that not only look great, but deliver a truly sensory experience.

We work to ensure our product designs are harmonious with all sanitaryware, so when you choose **VADO** your choice of coordinating items is unlimited. With **VADO** you can really **let your inspiration flow.**



OMIKA

A beautiful collection of accessories designed by Jo Love. Omika harnesses the well-being properties of water to deliver a sensory spa experience that redefines bathroom living.



Closed Paper Holder

OMI-180-C/P



Shelf with Geometric
Insert 100mm (4")

OMI-185-10-C/P



Shelf with Geometric
Insert 200mm (8")

OMI-185-20-C/P



Shelf with Geometric
Insert 500mm (20")

OMI-185-50-C/P



Shama
Robe Hook

SHA-186-C/P



Towel Rail
240mm (9.5")

OMI-181-C/P



Towel Rail
450mm (18")

OMI-184-45-C/P



Towel Rail
600mm (24")

OMI-184-60-C/P



KOVERA

Kovera blends a unique concave aesthetic with polished flat surfaces and elegant curved details to produce a stunning exclusive design, perfectly suited to any modern bathroom.



Paper Holder

KOV-180-C/P



Frosted Glass
Soap Dish + Holder

KOV-182-C/P



Frosted Glass
Tumbler + Holder

KOV-183-C/P



Robe Hook

KOV-186-C/P



Towel Ring

KOV-181-C/P



Towel Rail
450mm (18")

KOV-184-45-C/P



Towel Rail
500mm (20")

KOV-184-C/P



Double Towel Rail
500mm (20")

KOV-184A-C/P



Toilet Brush +
Frosted Glass Holder

KOV-188-C/P



SPA

Engineered to withstand the demands of daily hotel use, Spa is the perfect choice to add a touch of hotel luxury to your home



Paper Holder

SPA-180-C/P



Covered Paper Holder

SPA-180A-C/P



Frosted Glass
Soap Dish + Holder

SPA-182-C/P



Frosted Glass
Tumbler + Holder

SPA-183-C/P



Robe Hook

SPA-186-C/P



Angled Grab Rail
with Basket
465mm (18")

SPA-1802-C/P



Grab or Towel Rail
300mm (12")

SPA-1801-30-C/P



Infinity
Toilet Brush + Polished
Stainless Steel Holder

INF-188-C/P



Grab or Towel Rail
450mm (18")

SPA-1801-45-C/P



Towel Rail
450mm (18")

SPA-184-45-C/P



Towel Rail
600mm (24")

SPA-184-C/P



Towel Shelf with Rail
600mm (24")

SPA-185B-C/P



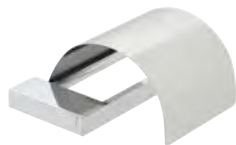
PHASE

Where curvy and linear lines seamlessly unite to create a look that encapsulates modern refinement.



Paper Holder

PHA-180-C/P



Covered Paper Holder

PHA-180A-C/P



Frosted Glass
Soap Dish + Holder

PHA-182-C/P



Frosted Glass
Tumbler + Holder

PHA-183-C/P



Robe Hook

PHA-186-C/P



Towel Ring
210mm (8")

PHA-181-C/P



Towel Rail
450mm (18")

PHA-184-45-C/P



Towel Rail
600mm (24")

PHA-184-C/P



Frosted Glass Shelf
558mm (22")

PHA-185-C/P



Toilet Brush +
Frosted Glass Holder

PHA-188-C/P



PHOTON

Fusing sweeping curves with sleek flat surfaces to produce an appealing accessory collection that will stand the test of time.



Paper Holder

PH0-180-C/P



Covered Paper Holder

PH0-180A-C/P



Frosted Glass
Soap Dish + Holder

PH0-182-C/P



Frosted Glass
Tumbler + Holder

PH0-183-C/P



Robe Hook

PH0-186-C/P



Spare Paper Holder

PH0-180S-C/P



Soap Holder

PH0-182A-C/P



Small Towel Bar
210mm (8")

PH0-181-C/P



Towel Rail
450mm (18")

PH0-184-45-C/P



Towel Rail
600mm (24")

PH0-184-C/P



Clear Glass Shelf
573mm (23")

PH0-185-C/P



Toilet Brush +
Frosted Glass Holder

PH0-188-C/P



INFINITY

Combining a simple geometric shape with an elegant curved finish, Infinity is the perfect accompaniment to any bathroom.



Paper Holder

INF-180-C/P



Soap Holder

INF-182A-C/P



Frosted Glass
Soap Dish + Holder

INF-182-C/P



Frosted Glass
Tumbler + Holder

INF-183-C/P



Eclipse
Robe Hook

ECL-186-C/P



Robe Hook

INF-186-C/P



Towel Ring
260mm (10")

INF-181-C/P



Towel Rail
450mm (18")

INF-184-45-C/P



Elements
Soap Dispenser

ELE-182B-C/P



Infinity
Toilet Brush + Polished
Stainless Steel Holder

INF-188-C/P



LEVEL

A striking contemporary range, fusing cool frosted glass with a geometric design, Level is the ideal choice for a distinctive finish.



Paper Holder

LEV-180-C/P



Square
Closed Paper Holder

SQU-180A-C/P



Frosted Glass
Soap Dish + Holder

LEV-182-C/P



Frosted Glass
Tumbler + Holder

LEV-183-C/P



Robe Hook

LEV-186-C/P



Spare Paper Holder

LEV-180S-C/P



Towel Ring

LEV-181-C/P



Soap Dispenser

LEV-182B-C/P



Towel Rail
450mm (18")

LEV-184-45-C/P



Towel Shelf with Rail
550mm (22")

LEV-185B-C/P



Frosted Glass Shelf
530mm (21")

LEV-185-C/P



Toilet Brush +
Frosted Glass Holder

LEV-188-C/P

Towel Rail
650mm (26")

LEV-184-C/P



SHAMA

Shama is the perfect accessory collection for those looking to add a touch of luxury combined with exceptional design.



Paper Holder

SHA-180-C/P



Frosted Glass
Soap Dish + Holder

SHA-182-C/P



Frosted Glass
Tumbler + Holder

SHA-183-C/P



Shama
Robe Hook

SHA-186-C/P



Level
Soap Dispenser

LEV-182B-C/P



Double Towel Rail
350mm (14")

SHA-184B-C/P



Towel Rail
450mm (18")

SHA-184-45-C/P



Towel Rail
640mm (25")

SHA-184-C/P



Toilet Brush +
Frosted Glass Holder

SHA-188-C/P



LIFE

Life's seamless, delicate contours bring an element of understated sophistication to any bathroom.



Paper Holder

LIF-180-C/P



Frosted Glass
Soap Dish + Holder

LIF-182-C/P



Frosted Glass
Tumbler + Holder

LIF-183-C/P



Robe Hook

LIF-186-C/P



Towel Ring

LIF-181-C/P



Towel Rail
450mm (18")

LIF-184-45-C/P



Towel Rail
655mm (26")

LIF-184-C/P



Frosted Glass Shelf
530mm (21")

LIF-185-C/P



Elements
Soap Dispenser

ELE-182B-C/P



Toilet Brush +
Frosted Glass Holder

LIF-188-C/P



ELEMENTS

Curvaceous, yet chic, the Elements accessory collection is the perfect modern classic to suit any bathroom aesthetic.



Paper Holder

ELE-180-C/P



Covered Paper Holder

ELE-180A-C/P



Frosted Glass
Soap Dish + Holder

ELE-182-C/P



Frosted Glass
Tumbler + Holder

ELE-183-C/P



Robe Hook

ELE-186-C/P



Spare Paper Holder

ELE-180S-C/P



Shower Basket

ELE-182A-C/P



Towel Ring

ELE-181-C/P



Soap Dispenser

ELE-182B-C/P



Towel Rail
450mm (18")

ELE-184-45-C/P

Towel Rail
695mm (27")

ELE-184-C/P



Frosted Glass Shelf
558mm (22")

ELE-185-C/P



Toilet Brush +
Frosted Glass Holder

ELE-188-C/P



TOURNAMENT

Traditional values with refined characteristics;
a flawless finish for modern-classic bathrooms.



Closed Paper Holder

TOU-180A-C/P



Ceramic
Soap Dish + Holder

TOU-182A-C/P



Ceramic
Tumbler + Holder

TOU-183A-C/P



Robe Hook

TOU-186-C/P



Towel Ring

TOU-181-C/P



Towel Rail
560mm (22")

TOU-184-C/P



Clear Glass Galley Shelf
510mm (20")

TOU-185A-C/P



Freestanding
Toilet Brush + Polished
Stainless Steel Holder

TOU-188-C/P



BASKETS

Stylishly store your showering and bathing essentials in this collection of easy-fit baskets.



Removable Corner Basket
185 (W) x 185 (D) x 60mm (H)

BAS-2000-C/P



Medium Triangular
Corner Basket
220 (W) x 147 (D) x 65mm (H)

BAS-2015M-C/P



Large Triangular
Corner Basket
260 (W) x 164 (D) x 85mm (H)

BAS-2015L-C/P



Large Triangular
Corner Basket
270 (W) x 194 (D) x 105mm (H)

BAS-2012-C/P



Corner Basket
with Hook
206 (W) x 206 (D) x 90mm (H)

BAS-2014-C/P



Small Rectangular Basket
135 (W) x 103 (D) x 37mm (H)

BAS-2001-C/P



Medium Rectangular Basket
210 (W) x 128 (D) x 37mm (H)

BAS-2002-C/P



Medium Rectangular Basket
210 (W) x 128 (D) x 65mm (H)

BAS-2016M-C/P



Large Rectangular Basket
300 (W) x 138 (D) x 85mm (H)

BAS-2016L-C/P



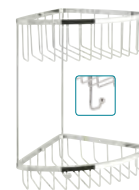
Large Double Triangular
Corner Basket
200 (W) x 160 (D) x 206mm (H)

BAS-2013-C/P



Large Double Rectangular
Basket with Hooks
304 (W) x 140 (D) x 484mm (H)

BAS-2003-C/P



Large Double Triangular
Corner Basket with Hook
269 (W) x 196 (D) x 368mm (H)

BAS-2004-C/P

GUARANTEE

All VADO products come with a 2 year guarantee as standard. Within this guarantee period VADO will provide replacement parts and any labour [SEE NOTE 1] needed to complete the product repair. This standard guarantee may be extended by registering your product to give up to a 12 year guarantee period. Once registered:

VADO chromed brassware and stainless steel products have a 12 year guarantee (2 years parts and labour plus 10 years parts only).

VADO digital and i-tech products have a 6 year guarantee (2 year parts and labour plus 4 years parts only).

All other VADO products have a 3 year guarantee (2 years parts and labour plus 1 year parts only) [SEE NOTE 2].

VADO electric showers have a 2 years parts and labour guarantee.

GUARANTEE CONDITIONS

Our products are guaranteed against manufacturing defects from the date of purchase until the expiry of the relevant guarantee period shown above.

The guarantee is only valid if:

1. The product has been installed, used and maintained (maintenance guidelines can be viewed here) in accordance with VADO's instructions and subjected to normal use only.
2. The defect is not due to use of an unsuitable or inadequate water or power supply.
3. The defect is not due to accident, misuse, neglect or incorrect/inappropriate repair (other than by VADO or VADO authorised agents) or damage caused by foreign objects or substances.

TERMS & CONDITIONS

DEFINITIONS

In these conditions 'the Company' shall mean VADO, a division of Norcros (Holdings) Limited, 'the purchaser' shall mean the person, firm or company to whom any quotation is addressed or with whom any contract is made and 'the goods' shall mean the goods and/or services agreed to be sold by the Company to the purchaser.

1. QUOTATION AND ACCEPTANCE

- (a) All quotations are given and all orders are accepted on these terms which shall apply to the exclusion of and shall override any other terms stipulated or referred to by the purchaser whether in its order or any other document, or in any negotiations or communication or course of dealing established between the Company and the purchaser;
- (b) No modification or amendment of these terms or addition thereto shall be effective unless made in writing and signed by a director of the Company.

2. DESCRIPTION OF AND STATEMENTS AS TO GOODS

- (a) Save where the goods are stated to be sold as complying with a recognised trade or industry standard, all descriptions, specifications, drawings and particulars of weights and dimensions submitted by the Company or otherwise contained in the Company's catalogues, brochures, price lists, quotations and publicity materials are approximate only and the Company shall not be liable for their accuracy unless they are expressly incorporated into the contract in writing;
- (b) These terms represent the entire agreement between the Company and the purchaser relating to the goods and such terms supersede and the purchaser shall not place any reliance upon any statements, recommendations and advice whether oral or in writing given (whether before or after the acceptance by the Company of the purchaser's order) by the Company, its servants or agents as to any matter relating to the goods save where such statement, recommendations or advice is given in writing and signed by a director of the Company in response to a specific written request from the purchaser before or at the time of the Company's acceptance of the order.

3. PRICES

Prices quoted by the Company are those in effect at the date of quotation. Unless otherwise agreed in writing, the Company reserves the right to increase prices when it

4. The extended guarantee is only available if you have completed the Guarantee Registration Process. This can be done via the VADO website or via phone to our aftersales team. Registration must be completed within 6 months from date of purchase.

Under the extended guarantee period VADO will, at its option, offer to supply any replacement product (or component part) assessed to be defective [SEE NOTE 3].

The guarantee (whether standard or extended) is non-transferable to any subsequent owner.

All claims under the guarantee should be notified in the first instance to our Aftersales department, contact details below, this must be done no later than the last day of the relevant guarantee period. All claims must be accompanied by proof of purchase (sales receipt or delivery note) from an official VADO dealer.

The guarantee does not extend to any consequential loss or damage.

After repair or replacement, the relevant guarantee period will be calculated from the original date of purchase.

VADO operates a policy of continuous product development and therefore reserves the right to change the product, packaging and documentation specifications without notice.

NOTES:

[1] Labour via our engineer network is only available in the UK. Attendance by a VADO engineer or sub-contract engineer will be under our standard terms and conditions.

[2] VADO spare parts and shower hoses are under a parts only guarantee.

[3] VADO reserves the right to charge in advance for a product (or replacement part) pending collection and investigation (at VADO expense) to confirm a defect is due to a manufacturing issue. If a defect is found the charge will be refunded or cancelled.

This guarantee is in addition to and does not affect your statutory rights as a consumer.

Tel: 01934 745163 **Email:** aftersalescare@vado.com

accepts the purchaser's order so as to reflect one or more of the following:

- (a) any variation that may have occurred in the costs of labour, materials, suppliers overheads and transport;
- (b) any change in duty, tax, surcharge or levy of any kind whatsoever affecting the sale price of the goods;
- (c) any cost to the Company resulting from delay by the purchaser in giving to the Company information sufficient to enable it to supply the goods or provide the services or resulting from any alteration made at the request of the purchaser in the specification of the goods or in the place to which they are to be delivered or shipped;
- (d) any extra cost to the Company resulting from the goods being carried at the request of the purchaser by mode of transport more expensive than the Company's normal form of transport.

4. PAYMENT

- (a) Unless otherwise agreed in writing, the price for the goods will be due and payable on the last business day of the month following delivery;
- (b) The Company shall be entitled to charge interest on any part of the price which is not paid in accordance with clause (a) at the rate per annum of 3% above the Base Rate of Lloyds Banking Group from time to time;
- (c) Time of payment is of the essence and if the purchaser defaults in punctual payment of the price the Company shall be entitled to terminate the contract and recover the goods at the purchaser's expense without prejudice to any further rights which the Company may have;
- (d) Any default in payment of an invoice or an instalment payment on an invoice on the due date shall render the entire balance outstanding on all invoices from the Company to the purchaser immediately payable in full without demand being made notwithstanding any contrary provisions as to terms of payment in any one or all invoices;
- (e) If the purchaser fails to give all instructions reasonably required by the Company and all necessary document, licences, consents and authorities for forwarding the goods or is unable to accept delivery of the goods at the time when the goods are due and ready for despatch or delivery or shall otherwise cause or request delay, the purchaser shall pay to the Company all costs and expenses, including storage and insurance charges incurred or arising from such delay during which, at the Company's absolute discretion

- if its storage facilities permit, the goods will be stored at the purchaser's sole risk. This provision shall be in addition to and not in substitution for any other payment or damages for which the purchaser may be liable in respect of his failure to take delivery at the appropriate date;
- (f) The purchaser shall not be entitled to make any deduction from the price of goods which have been delivered to the purchaser in respect of any set off or counterclaim unless both the validity and the amount thereof have been expressly admitted in writing by the Company and such admission is signed by a director of the Company;
 - (g) In the absence of any specific appropriation by the purchaser, the Company shall have the right to appropriate any payment made by the purchaser towards the satisfaction of any invoice outstanding from time to time as the Company shall in its absolute discretion think fit.
- 5. DELIVERY**
- (a) Any time or date stated for delivery is given and intended as an estimate only and the Company shall not be liable for any loss or damage whatsoever resulting from any delay in delivery howsoever arising;
 - (b) Unless otherwise stated in writing delivery shall be deemed to take place upon the occurrence of the first in time of the following, namely:
 - i. the physical delivery of the goods to the purchaser at the Company's works;
 - ii. the physical delivery of the goods to the purchaser's carrier or agent for the purpose of transmission to the purchaser or his nominee;
 - iii. the physical delivery of the goods to the purchaser's place of business or such other place as he may direct by the Company, its carrier or agent, the purchaser being responsible for unloading;
 - (c) Signature of the Company's delivery note by any employee, representative or agent of the purchaser shall be conclusive proof of delivery;
 - (d) Where the contract provides for delivery by the Company, its carrier or agent:
 - i. any claims for non-delivery must be made in writing to the Company within three days of receipt of invoice or advice note whichever is the earlier;
 - ii. any claims in respect of goods damaged in transit or shortages in delivery must be made in writing to the Company within three days of delivery; shortages in delivery shall not give rise to a right to reject the goods delivered;
 - (e) The Company shall be entitled to make partial deliveries or deliveries by instalments and all the provisions of these terms shall apply to such deliveries;
- 6. PROPERTY AND RISK**
- (a) Risk in the goods shall pass to the purchaser at the time at which delivery takes place in accordance with clause 5 above and the purchaser shall be solely responsible for insuring the goods thereafter;
 - (b) The Company shall retain ownership of and title in the goods delivered until full payment has been made in respect of all such goods. Until such time the goods shall be:
 - i. stored separately from other goods in the possession of the purchaser;
 - ii. marked or otherwise rendered identifiable as being the property of the Company;
 - iii. held by the purchaser as bailee of the Company;
 - iv. held by the purchaser free from any charge, lien or other encumbrance;
 - (c) Provided the Company has not requested their return and notwithstanding that payment in full has not been made for all of the goods delivered, the purchaser as principal and not as agent for the Company shall be entitled to use the goods or offer for sale and sell them in the ordinary course of his business;
 - (d) Where the purchaser sells the goods prior to paying for them in full:
 - i. the Company shall be legally and beneficially entitled to the proceeds of sale;
 - ii. the purchaser shall hold the proceeds of sale on trust for the Company and shall not mingle them with other monies and shall not pay them into an overdrawn bank account;
 - iii. he shall deposit the proceeds of sale in a separate bank account, the location and number of which he has previously notified to the Company, and he shall not be entitled to use or deal with the proceeds of sale until payment in full for the goods has been made to the Company;
 - (e) The Company shall have the right at any time by its servants or agents to enter the purchaser's premises where the goods are stored, or are thought the Company to be stored, so as to:
 - i. retake possession of the goods when the Company has requested their return and the purchaser has not immediately complied with the request, such retaking or return to be without prejudice to any other rights the Company may have arising therefrom;
 - ii. inspect the storage of the Company's goods which have not been paid for in full;
 - iii. investigate and ascertain whether all these terms are being complied with;
- 7. GUARANTEE AND LIABILITY**
- (a) The Company guarantees all goods which have been manufactured by the Company against any defect of work or materials which can be proved to the Company's satisfaction to have been caused before delivery provided that:
 - i. the goods are used for their normal purpose,
 - ii. full details of any such defect are notified to the Company within thirty days of its first appearance and the goods in which the defect arises are returned at the purchaser's expense to the Company;

- (b) The guarantee shall be for a period of twelve years from the date of delivery for all product except pumps which are 3 years for Monsoon and 1 year for Showermate and products with any other finish that is not chrome, such as gold, which are guaranteed for 3 years. The liability of the Company shall be limited at its option either to supply replacement goods, which will be supplied subject to these terms, or refunding of the goods;
 - (c) The Company gives no guarantee in respect of goods not manufactured by it but shall use all reasonable endeavours to procure for the purchaser or assign to the purchaser the benefit of any guarantee obtained by it from the manufacturer or supplier thereof; however the Company shall not be required to commence litigation against such manufacturer or supplier or to incur any expense in connection with any such claim by the purchaser;
 - (d) The above guarantee is given in lieu of and to the exclusion of all other warranties, conditions, representations and undertakings express or implied by statute or otherwise in respect of the quality or fitness for purpose of the goods or as to their condition or performance or as to any other matter except where such warranty or condition is implied by statute and by reason of a statutory provision, cannot be excluded;
 - (e) Save as provided herein and save in any case where death or personal injury has been caused by the Company's negligence or any case where the Company is liable for a defect in the goods pursuant to Part 1 of the Consumer Protection Act 1987 or any statutory replacement thereof, the Company shall be under no liability whatsoever to the purchaser for any loss or damage whether direct, indirect or consequential arising out of any defect in, failure of or unsuitability for any purpose of the goods or any part thereof whether the same be due to any act, omission, breach of contract, negligence or wilful default in design, workmanship or materials or any other cause.
- 8. INDEMNITY AS TO INDUSTRIAL PROPERTY RIGHTS**
- (a) The purchaser shall indemnify the Company against all loss, damages, costs and expenses suffered or incurred by the Company or to which the Company may become liable as a result of any work carried out in accordance with the purchaser's specification(s) which involves infringement or alleged infringement of a patent, registered design or other industrial property right;
 - (b) If the purchaser uses or sells the goods in such a manner as to infringe any such rights the company shall not be responsible for such infringement and the purchaser agrees to indemnify the Company from and against all liability arising therefrom.
- 9. TERMINATION**
- The Company shall have the right forthwith to cancel the purchaser's order if any of the following events occur and subject to enforcement of the Company's rights to recover the goods and to receive payment of the price or damages, the contract shall be deemed to have terminated:
- (a) the purchaser commits any breach of its obligations to the Company;
 - (b) any distress or execution is levied upon any property of the purchaser;
 - (c) the purchaser makes or offers to make any arrangement or composition with creditors or commits any act of bankruptcy or insolvency;
 - (d) any resolution is passed or petition presented to wind up the purchaser;
 - (e) a receiver or administrator is appointed or any chargee takes possession of all or any part of the undertaking or assets of the purchaser;
 - (f) the purchaser stops payment or ceases or threatens to cease to carry on its business or to pay its debts as and when they fall due;
 - (g) any remittance for payment of the whole or any part of the purchase price of the goods is dishonoured by the purchaser's bankers.
- 10. ASSIGNMENT**
- The purchaser shall not assign or transfer or purport to assign or transfer any contract to which these terms apply to any other person without the Company's prior written consent. The Company reserves the right to subcontract the performance of the contract or any part of it.
- 11. FORCE MAJEURE**
- If the Company is prevented or delayed [directly or indirectly] from making delivery of the goods or any part thereof or from otherwise performing the contract or any part thereof by reason of war, embargo, riot, strike, lock-out, trade dispute, fire, breakdown of plant or machinery, inclement weather, interruption of transport, Government action, delay in delivery to the Company of any goods or materials, or by any cause whatsoever (whether or not of a like nature to the foregoing) outside its control, it shall be under no liability whatsoever to the purchaser and shall be entitled at its option either to cancel the contract or without any liability to extend the time or times for delivery by a period equivalent to that during which such delivery has been prevented.
- 12. PROPER LAW**
- The contract and these terms shall be governed by English law and the purchaser shall submit to the sole jurisdiction of the English Courts.



WHERE INSPIRATION FLOWS



VADO

Wedmore Road Cheddar Somerset England BS27 3EB

tel +44 (0)1934 745160

fax +44 (0)1934 745161

www.vado.com

export@vado.com

due to our policy of continual improvement, VADO reserve the right to change product specification.
the colours indicated are an approximation of the actual finishes on VADO products. e&oe.

©2018 VADO

